



DEER RESISTANT: ORNAMENTAL GRASS



© Rainbow Gardens 2022

Common Name	Native	Avg. Mature Size
Blue Oat Grass		24"-36" T x 24"-30" W
Blue Eyed Grass		1' T x 1' W
Blue Fescue Grass		1' T x 1' W
Fountain Grasses: *Hameln' (Dwf Fountain) **Purple Fountain		*24' x 18" W **3' T x 2' W
Horsetail Rush		2'-4' T x 3' W
Inland Sea Oats	✓	2'-4' T x 3' W
Lemongrass		3'-5' T x 2' W
Little Bluestem	✓	18"-24" T x 12" W
Mexican Feather Grass	✓	18" T x 18" W
Miscanthus Grass: *Autumn Red Japanese **Cosmopolitan ***Dwarf Maiden ***Japanese Silver ****Graziella ****Maiden *****Zebra		*4' T x 3' W **6' T x 5' W ***3' T x 3' W ****6' T x 4' W *****5'-8' T x 4'-6' W
Muhly Grass: Bamboo Gulf Lindheimer's	✓	3'-6' T x 3'-4' W
Napier Grass		varies widely by variety
Nolina Grass	✓	1.5'-2.5' T x 2' W
Pampas Grass		6' T x 6' W
Sedges		4"-24" T x 4"-12" W
Umbrella Grass		3'-6' T x 2'-3' W



DEER RESISTANT: PERENNIALS

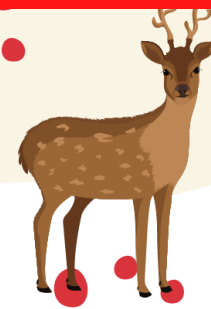


© Rainbow Gardens 2022

Perennials & Reseeding Biennials	Native	Pollinator Friendly	Water Use	Bloom Season
Agapanthus (Lily of the Nile)		✓	Med	Summer-Fall
Agastache	✓	✓	Low	Summer-Fall
Amaryllis			Med	Spring or Fall
Artemesia		✓	Low	N/A
Angel's Trumpet			High	Summer-Fall
Balloon Flower			Med	Spring-Summer
Beebalm	✓	✓	Low	Summer
Black-Eyed Susan		✓	Low	Summer-Fall
Blackfoot Daisy	✓	✓	Low	Spring - Fall
Blanket Flower (Gaillardia)	✓	✓	Low	Summer-Fall
Butterfly Weed		✓	Med	Summer-Fall
California Poppy		✓	Low	Spring
Cape Mallow		✓	Med	Spring -Fall
Candytuft		✓	Low	Spring and Fall
Cape Honeysuckle		✓	Med	Fall
Candlestick Cassia		✓	Med	Summer-Fall
Cast Iron Plant			Low	N/A
Chile Petin	✓	✓	Low	Summer-Fall
Chrysanthemum		✓	Med	Fall
Columbine: Texas Gold	✓	✓	Med	Spring
Coneflower	✓	✓	Med	Spring-Summer
Copper Canyon Daisy	✓	✓	Low	Summer-Fall
Coral Bells		✓	Med	Spring-Summer
Coreopsis	✓	✓	Low	Summer



DEER RESISTANT: PERENNIALS

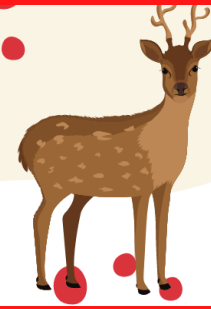


©Rainbow Gardens 2022

Perennials and Reseeding Bienials cont...	Native	Pollinator Friendly	Water Usage	Bloom Season
Crocoshmia			✓	Spring-Summer
Daffodil		✓	High	Spring
Dalea (Black)	✓	✓	Low	Summer-Fall
Damianita	✓	✓	Low	Spring-Fall
Dark Knight Bluebeard		✓	Low	Summer-Fall
Daylily		✓	Low	Spring-Fall
Dusty Miller			Low	N/A
Elephant Ears			High	N/A
Euphorbia	✓	✓	Low	N/A
Fall Aster		✓	Low	Fall
Firebush		✓	Low	Summer-Fall
Fleabane Daisy	✓	✓	Low-Med	Spring-Summer
Flowering Maple		✓	Med-High	Winter-Spring
Four Nerve Daisy	✓	✓	Low	Spring-Fall
Foxglove		✓	Med	Summer-Fall
Frostweed	✓	✓	Med	Fall
Gaura	✓	✓	Low	Spring-Fall
Gazania		✓	Low	Summer-Winter
Gingers			Med	Summer-Fall (dep on variety)
Gregg's Blue Mistflower	✓	✓	Med	Summer-Fall
Hardy Hibiscus (Rose Mallow)	✓	✓	High	Summer-Fall
Holly Fern			Med	N/A
Hummingbird Bush (Flame Acanthus)	✓	✓	Low	Summer-Fall



DEER RESISTANT: PERENNIALS

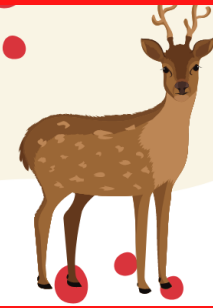


© Rainbow Gardens 2022

Perennials and Reseeding Bienials cont...	Native	Pollinator Friendly	Water Usage	Bloom Season
Iris: African Bearded		✓	Med (African) Low (Bearded)	Spring-Summer
Lantana	(only TX variety)	✓	Low	Summer-Fall
Lavender (English)		✓	Low	Summer-Fall
Lamb's Ear			Low	N/A
Lily: *Aztec *Blackberry **Crinum ***Oxblood		✓	Low-Med	*Summer **Spring ***Fall
Lion's Tail		✓	Med	Summer
Mexican Honeysuckle			Low	Spring-Fall
Mexican Mint Marigold		✓	Med	Fall
Mexican Oregano		✓	Low	Spring-Fall
Milkweeds: Native: Antelope Horn, Green, Texas, Tuberosa Tropical	✓ (Native varieties)	✓	Low-Med (dep. on variety)	Spring-Fall
Mirror Plant			Med	N/A
Obedient Plant	✓	✓	High	Summer-Fall
Ox-Eye Daisy			Med	Spring
Penstemon	✓		Med	Spring
Phlox (Summer)		✓	Med	Summer
Plumbago		✓	Low-Med	Summer-Fall
Pride of Barbados		✓	Low	Summer-Fall
Red Hot Poker		✓	Low	Spring-Summer



DEER RESISTANT: PERENNIALS



© Rainbow Gardens 2022

Perennials and Reseeding Bienials cont...	Native	Pollinator Friendly	Water Usage	Bloom Season
Rock Rose	✓	✓	Low	Spring-Fall
Rosemary		✓	Low-Med	Spring-Summer
Sages/ Salvias	depends on varieties	✓	Low	Spring-Fall
Santolina: Gray Green			Low	Summer
Skullcap		✓	Low	Spring-Fall
Society Garlic			Med	Spring-Fall
Speedwell		✓	Med	Summer-Fall
Sundrops (Berlianderi)	✓	✓	Low	Spring-Fall
Thyallis		✓	Med	Spring-Fall
Turk's Cap	✓	✓	Low	Spring-Fall
Verbena		✓	Low	Spring-Fall
Wallflower		✓	Low	Fall-Spring
Wooly Ironweed	✓	✓	Low	Summer-Fall
Yarrow		✓	Low	Summer-Fall
Zexmenia	✓	✓	Low	Summer

Keep in mind that these perennials are deer RESISTANT, not deer-proof. Few plants are truly deer-proof because of their nitrogen levels in various tissues, but many are undesirable enough to deer that they will leave them alone as long as other food is available. During droughts and other food-shortage situations, deer can become hungrier and may eat plants they would normally avoid.

*Low water usage plants still need to be watered adequately when first planted to get established and may need supplemental irrigation during periods of extreme heat and drought.



DEER RESISTANT: SHRUBS



© Rainbow Gardens 2022

Shrubs	Native	Pollinator Friendly	Evergreen		Avg. Mature Size
Abelia		✓	✓		Varies widely by variety
Acuba			✓		4'T x 3'W
Agarita	✓	✓	✓		Varies widely by variety
Azalea		✓	✓		Varies widely by variety
Bamboo			Semi		Varies widely by variety
Barberry					2'-5'Tx2'-5'W
Beautyberry (American)	✓	✓			7'T x 4'W
Bottlebrush (Little John Dwf.)		✓	✓		3'-8'T x 5'-8'W
Boxwood			✓		2'-6'T x 2'-5'W
Butterfly Bush		✓			4'-8'T x3'-4'W
Camellia		✓	✓		Varies widely by variety
Cast Iron Plant			✓		2'T x 3'W
Coralberry	✓	✓			2'-4'T x 4'-6'W
Cotoneaster		✓	Semi		2'-4'T x5'-7'W
Cypress (Blue Italian)			✓		30'T x 3'W
Elaeagnus			✓		6'T x 4'W
Esperanza	✓	✓	Semi		3'-6''T x 3'-4'W
Forsythia		✓			5'T x 4'W
Holly: *Dwarf **Yaupon	✓	✓	✓		*2'-3'T x 3'-4'W **12'-25'T x 8'-12'W



DEER RESISTANT: SHRUBS



© Rainbow Gardens 2022

Deer Resistant Shrubs cont...	Native	Pollinator Friendly	Evergreen	Avg. Mature Size
Japanese Aralia		✓	✓	5'-8'T x 5'-8'W
Japanese Yew			✓	10'T x 3'W
Juniper			✓	Varies widely by variety
Mahonia (Oregon Grape Holly)			✓	5'T x 3'W
Mexican Silk tassel	✓		✓	5'-11'T x 5'-11'W
Nandina			✓	Varies widely by variety
Oleander			✓	4'-20'T x 3'-10'W
Palms (bush types)			✓	Varies widely by variety
Pineapple Guava		✓	✓	10'-15'T x 10'-15'W
Pomegranate (Compact)		✓		2'-4'T x 2'-4'W
Pride of Barbados		✓		15'T x 15'W
Primrose Jasmine			✓	5'-10'T - 8'W
Pyracantha			✓	2'-8'T x 3'-6'W
Sago Palm			✓	3'T x 10'W
Spanish Broom			✓	5'T x 6'-10'W
Silverbush Germander		✓	✓	4'-6'T x 4'-6'W
Southern Wax Myrtle (Dwf.)	✓		✓	3'-6'T x 3'-6'W
Split Leaf Philodendron			✓	10'T x 12'W
St. John's Wort	✓	✓	Semi	1'-3'T x 2'W



DEER RESISTANT: SHRUBS



© Rainbow Gardens 2022

Deer Resistant Shrubs cont...	Native	Pollinator Friendly	Evergreen	Avg. Mature Size
Sumac: *Evergreen **Flameleaf	✓	✓	Semi	*8'-12" T x 8'-12" W **20' T -15' W
Texas Sage (Cenizo)	✓	✓	✓	Varies widely by variety
True Greek Myrtle		✓	✓	10' T x 12' W
Viburnum: Rusty Blackhaw	✓	✓		10'-18' T x 8'-12' W
Wooly Butterfly Bush	✓	✓		5' T x 5' W

Keep in mind that these shrubs are deer RESISTANT, not deer-proof.

Few plants are truly deer-proof because of their nitrogen levels in various tissues, but many are undesirable enough to deer that they will leave them alone as long as other food is available.

During droughts and other food-shortage situations, deer can become hungrier and may eat plants they would normally avoid.



DEER RESISTANT: TREES



© Rainbow Gardens 2022

Deer Resistant Trees	Native	Evergreen	Water Usage	Avg. Mature Size
Anacacho Orchid	✓		Low	6'-12'T x 6'-10'W
Arizona Cypress	✓	✓	Low	25'-30'T x 10'-18'W
Bald Cypress	✓		High	70'T x 40'W
Bigtooth Maple	✓		Low	30'T x 30'W
Chaste Tree (Vitex)			Low	10'-20'T x 15'W
Cherry Laurel	✓	✓	Low	15'-40'T x 10'-35'W
Chinese Pistache			Low	40'T x 30'W
Desert Willow	✓		Low	25'T x 15'W
Fig			Low	10'-30'T x 20'W
Flameleaf Sumac	✓	Semi	Low	20'T x 15'W
Ginkgo			Med	50'-60' x 23'-30' W
Japanese Maple			Med	15'-25'T x 20'W
Lacey Oak	✓		Low	25'T x 20'W
Magnolia (Southern)	✓	✓		50'-80'T x 40'W
Mexican Buckeye	✓		Low	10'-15'T x 6'-8'W
Mexican Olive	✓	Semi	Low	20'T x 20'W
Mexican Plum			Low	15'-25'T x 10'-15'W
Mexican Sycamore			Low	60'T x 30'W
Olive/Dwf Olive	✓	✓	Low	10'-25'T x 5'-25'W
Palms (most varieties)		✓	Med	Depends on variety
Pecan			High	70'T x 60'W
Pine: *Aleppo **Austrian ***Japanese Black ****Loblolly *****Pinyon	✓ (Loblolly and Pinyon only)	✓	Low	*40'T x 10'W **40'T x 30'W ***30'T x 30'W ****50'T x 30'W *****15'T x 10'W



DEER RESISTANT: TREES



© Rainbow Gardens 2022

Deer Resistant Trees cont...	Native	Evergreen	Water Usage	Avg. Mature Size
Pomegranate			Med	20'T x 15'W
Purple Leaf Plum			Med	20'T x 20'W
Redbud: *Eastern *Western	✓		Low	*25'T x 25'W **10'-20'T x 8'-15'W
Palo Verde **Desert Museum Palo Verde	✓		Low	*15'-20'T x 12'-15'W **20'-30'T x 20'-30'W
Retama	✓		Low	15'-20'T x 10'-15'W
Southern Wax Myrtle	✓	✓	Med	15'T x 10'W
Texas Buckeye	✓		Med-High	30'T x 30'W
Texas Mountain Laurel	✓	✓	Low	20'T x 15'W
Texas Persimmon	✓	Semi	Low	10'-15'T x 6'-8'W
Texas Pistache	✓		Low	20'T x 20'W
Thornless Honey Locust			Low	50'T x 45'W

Keep in mind that these trees are deer RESISTANT, not deer-proof. Few plants are truly deer-proof because of their nitrogen levels in various tissues, but many are undesirable enough to deer that they will leave them alone as long as other food is available.

During droughts and other food-shortage situations, deer can become hungrier and may eat plants they would normally avoid.

Large trees require protection with cages until they grow taller than a deer standing on their hind legs. Also keep in mind that many varieties of small trees, although deer resistant, will suffer serious damage from bucks removing velvet from antlers by rubbing along trunks and branches.

Tree wraps or cages are helpful.

*Even low water usage trees need ample water in their first year or two while being established.



DEER RESISTANT: ANNUALS



© Rainbow Gardens 2022

Deer Resistant Annuals (or reseeding biennials)	Light Req.	Water Usage	Pollinator Friendly	Avg. Mature Size
Ageratum	Sun/Part Sun	High	✓	8"-12"T x 8"-12"W
Allysum	Part Sun	Med	✓	3"-10"T x 2"-4"W
Begonia	Part Sun/Shade (bronze leaved can take more sun)	Low		6"-12"T x
Bluebonnet	Sun	Med	✓	12"-14"T x 8"-10"W
Caladium	Sun/Part Sun/Shade	Low		14"-20"T x 12"-24"W
Carnations (Garden Pinks)	Sun/Part Sun	High	✓	8"-20"T x 10"-18"W
Cosmos	Sun	Low	✓	18"-36"T x 18"-24"W
Cyclamen	Part Shade	Med		6"-9"T x 6"-9"W
Dahlberg Daisy	Sun	Low-Med	✓	6"-12"T x 6"-12"W
Dianthus	Sun/Part Sun	High	✓	6"-10"T x 6"-12"W
Fan Flower	Sun/Part Sun	Med		6"-12"T x 12"-18"W
Foxglove	Sun/Part Sun	Med	✓	3'-4'T x 12"-18"W
Geraniums	Sun/Part Sun	Med		16"-24" T x 12"-18"W
Larkspurs	Sun	Med	✓	36"-48"T x 12"W
Lobelia	Part Sun	High		6'-8"T x 6"-12"W
Marigolds	Sun	Med	✓	6"-24"T x 6"-12"W
Nasturtiums	Sun/Part Sun	High	✓	8"-12"T x 6"-12"W
Phlox (Annual)	Sun	Med	✓	6"-12"T x 8"-30"W
Salvia (Annual)	Part Sun/Shade	Med	✓	12"-24"T x 8"-12"W



DEER RESISTANT: ANNUALS



© Rainbow Gardens 2022

Deer Resistant Annuals (or reseeding biennials) cont...	Light Req.	Water Usage	Pollinator Friendly	Avg. Mature Size
Snapdragons	Sun/Part Sun	Med	√	6"-36"T x 6"-12"W dep. on variety
Stock	Sun/Part Sun	High		1'-2'T x 8"-12"W
Verbena (Annual)	Sun	Med	√	8"-12"T x 6"-12"W
Vinca (Periwinkle)	Sun	Med		4"-18"T x 8"-12"W
Zinnia	Sun	Med	√	1'-3'T x 8"-12"W

Keep in mind that these annuals are deer RESISTANT, not deer-proof. Few plants are truly deer-proof because of their nitrogen levels in various tissues, but many are undesirable enough to deer that they will leave them alone as long as other food is available.

During droughts and other food-shortage situations, deer can become hungrier and may eat plants they would normally avoid.



DEER RESISTANT: VINES



© Rainbow Gardens 2022

Deer Resistant Vines	Light Req.	Evergreen	Pollinator Friendly
Carolina Jessamine	Sun/Part Sun	✓	✓
Clematis: Sweet Autumn	Sun/Part Sun		✓
Cross Vine	Sun/Part Sun	semi	✓
Honeysuckle: Cape (rambling shrub, shorter vine) Coral	Sun/Part Sun		✓
Ivy: *English **Fig	**Sun/.Part Sun/Shade	✓	
Jasmine: Sambac Star	Sun/Part Sun		*✓
Milkweed Vines	Sun/Part Sun		✓
Wisteria: Chinese Texas	Sun		✓

Keep in mind that these vines are deer RESISTANT, not deer-proof. Few plants are truly deer-proof because of their nitrogen levels in various tissues, but many are undesirable enough to deer that they will leave them alone as long as other food is available.

During droughts and other food-shortage situations, deer can become hungrier and may eat plants they would normally avoid.



DEER RESISTANT: GROUNDCOVERS



© Rainbow Gardens 2022

Deer Resistant Groundcovers	Light Req.	Water Usage	Evergreen	Avg. Mature Size
Ajuga (Carpet Bugle)	Part Sun	Med	✓	4"T x spreading
Asiatic Jasmine	Sun or Shade	Low		6"-12"T x spreading
Frog Fruit	Sun/PartSun	Med	✓	3"T x spreading
Germander: Creeping	Sun	Med	✓	12"-18"T x 12"-24"W
Juniper: *Bar Harbor **Blue Rug ***Green Mound	Sun	Low	✓	*6"T x 4'W **4"-6"T x 4'W ***1"T x 4'W
Liriope	Sun or Shade	Med	✓	12"-18"T x 15"-18"W
Mondo Grass	Part Sun/Shade	Med	✓	4"-8"T x spreading
Pigeonberry	Part Shade/Shade	Low		1.5'-2.5'T x
Santolina	Sun	Low	✓	2'T x 2'W
Stonecrop	Sun	Low	✓	16"T x 24"W
Strawberry Begonia	Part Shade/Shade	Med	✓	12"T x 12"-18"W
Thyme: Creeping	Sun/PartSun	Med	✓	2"T x 12"-18"W
Vinca: *Major **Minor	Part Shade/Shade	Med	✓	*8"-12"T x 3'-4'W **4"-8"T x spreading
Wedelia	Sun/Part Sun/Shade	Low	✓	2'T x 5'-6'W
Wooly Stemodia	Sun/PartSun	Low	✓	4"-10"T x spreading