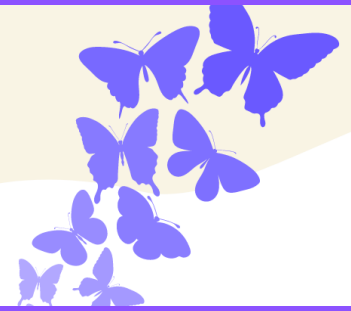




POLLINATORS: HOST AND NECTAR SHRUBS



© Rainbow Gardens 2022

Host Shrubs	Native	Butterflies	Host to:
Barbados Cherry	✓	✓	Brown-banded Skipper Cassius Blue Florida Duskywing White-patched Skippper
Black Dalea	✓	✓	Southern dogface
False Indian Mallow (subshrub/perennial)	✓	✓	Common Streaky Skipper
False Indigo Bush	✓	✓	Gray Hairstreak Marine Blue Silver-Spotted Skipper Southern Dogface
Flame Acanthus (sub shrub)	✓	✓	Crimson Patch Texan Crescent
Evergreen Sumac	✓	✓	Dusky-Blue Groundstreak
Guayacan	✓	✓	Gray Hairstreak Lyside Sulphur
Kidneywood	✓	✓	Southern Dogface
Mistflowers: White (Shrubby Boneset)	✓	✓	Bordered Patch Rawson's Metalmark
Senna Lindheimer's Two Leaf	✓	✓	Little Yellow Cloudless Sulphur Orange -Barred Sulphur Sleepy Orange White Angled Sulphur
Spicebush	✓	✓	Spicebush Swallowtail
Spiny Hackberry	✓	✓	Hackberry Emperor Tawny Emperor
Texas Sage (Cenizo)	✓	✓	Theona Checkerspot
Texas Ebony	✓	✓	Large Orange Sulphur
Viburnum		✓	Spring Azure
Wax Myrtle	✓	✓	Red-Banded Hairstreak



POLLINATORS: HOST AND NECTAR SHRUBS



© Rainbow Gardens 2022

Nectar/Food Shrubs	Native	Butterflies	Bees	Hummingbirds	Birds
Abelia		✓	✓	✓	
Agarita	✓		✓		✓
American Beautyberry	✓				✓
Barbados Cherry	✓	✓	✓		✓
Black Dalea	✓	✓			
Boneset White Mistflower	✓	✓	✓		
Bottlebrush: (Little John's Dwf. best for our area)			✓	✓	
Butterfly Bush		✓	✓	✓	
Buttonbush	✓	✓	✓		
Coralberry	✓		✓	✓	✓
Crape Myrtle (shrub or tree)			✓		
Elbow Bush	✓	✓			✓
Elderberry	✓	✓	✓		✓
False Indian Mallow	✓	✓			
Fairy Duster		✓		✓	
Fragrant Sumac	✓	✓	✓		✓
Guajillo	✓	✓	✓		✓
Holly: Yaupon Possumhaw	✓		✓		✓
Hawthorne (Crataegus)	✓	✓	✓		✓
Kidneywood	✓	✓	✓		
Mexican Buckeye	✓	✓	✓	✓	

